

## IMPORTANT - READ BEFORE USE

Wings Unlimited makes no representations or warranties as to the completeness or accuracy of the information.

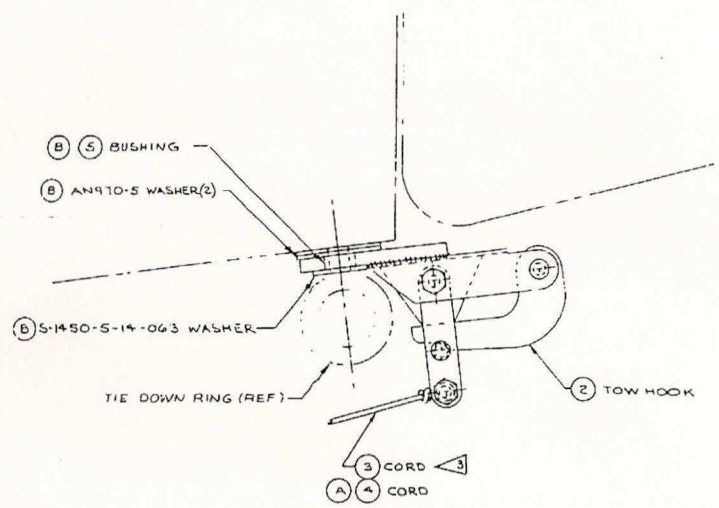
Information is supplied upon the condition that the persons receiving same will make their own determination as to its suitability for their purposes prior to use. In no event will Wings Unlimited be responsible for damages of any nature whatsoever resulting from the use of or reliance upon information from this drawing or the products to which the information refers.

Wings Unlimited does not warrant the accuracy or timeliness of the materials on this drawing and has no liability for any errors or omissions in the materials.

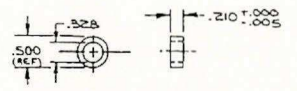
THIS DRAWING IS PROVIDED ON AN "AS IS" BASIS. NO REPRESENTATIONS OR WARRANTIES, EITHER EXPRESS OR IMPLIED, OF MERCHANTABILITY, FITNESS FOR A PARTICULAR PURPOSE OR OF ANY OTHER NATURE ARE MADE HEREUNDER WITH RESPECT TO INFORMATION OR THE PRODUCTS TO WHICH INFORMATION REFERS.

0500228

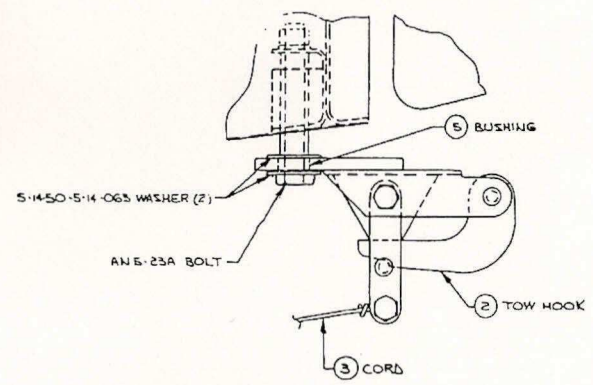
- NOTE:
- (B) 1. MATL FOR -2 IS NO. 10-112-15 TOW HOOK SCHWEIZER AIRCRAFT CORP ELMIRA NEW YORK
  - (D) 2. MATL FOR -51-4 IS NYLON RELEASE CORD 300LB WM TENSILE STRENGTH. -3 IS 18.0 FEET IN LENGTH, -4 IS 20.5 FEET IN LENGTH.
  - (B) 3. SECURE -3 TO ASSIST STRAP WITH MINIMUM SLACK.
  4. GROSS WEIGHT OF A GLIDER IS NOT TO EXCEED 1200 LBS ON 172, F172, & FR172 MODELS OR 917 LBS ON 150, A150, F150, FA150, A152, F152, FA152 MODELS
  5. FOR PLACARDS & PLACARD REQUIREMENTS REFER TO: 0400340 FOR 150, F150, A150 & FA150 0500420 FOR 172, F172 & FR172



(G) (J) (1) TOW HOOK INSTL



(B) (E) BUSHING



(J) (F) (G) TOW HOOK INSTL -150/152

CHG LET	REVISION	BY DATE	CHK APPR
A	BY REV: ADD -4 & SEPARATE PL (SR3707)E	LJW 8-2-48	MTW
B	DCN 1: ADD NOTE 4, BY REV: NOTE 1 WAS MATL FOR -2 IS NO. 10-112-1 TOW HOOK, SCHWEIZER AIRCRAFT CORP, ELMIRA, NEW YORK; DELETE AN 960-716 WASHER (2); ADD -5 BUSHING, AN470-5 WASHER (2) & S-1450-5-14-063 WASHER	WJR 6-11-48	MTW
C	BY REV: NOTE 4 REVISED-1200 LBS/172, F172, FR172 WAS 798 LBS/F172, FR172, ADD 817 LBS/150, A150, F150, FA150 NOW SHOP PRACTICE	LOB 2-29-70	MTW
D	UNCOR DCN 2 BY REV: ADD LENGTH -3 & 4; DELETE "REFER-----REQMT" IN NOTE 4; ADD NOTE 5, DELETE 207 NOW SHOP PRACTICE	JEB 6-4-74	MTW
E	BY REV: DELETE "GLIDER" FROM TITLE	66C 7-25-74	MTW
F	BY REV: ADD -G (SR3250) (REF)	RCC 5-2-75	MTW
G	BY REV: INACTIVATE -1 & 6 (SR455) (REF), (SR415) (REF), (SR455) (REF), (SR415) (REF)	KLL 7-21-77	MTW
H	BY REV: REACTIVATE DWG -2, 3, 5, 6, 7, 8 (NOW SHOP PRACTICE)	5-24-78	MTW
J	BY REV: REACTIVATE -1 & 6 (NOW SHOP PRACTICE)	2-24-78	MTW

78-0122  
77-0122  
84-0122

NO REQ/ NEXT ASSY	EFFECTIVE SERIALS	QTY	UNIT	DESCRIPTION	QTY	UNIT	MATERIAL	HEAT TREAT	FINISH	REV
				SEPARATE PL						
				LIST OF MATERIAL						
				TOW HOOK INSTALLATION						

Cessna  
0500228